

Nortel Networks

Contivity Configuration Manager

CCM key features and benefits

- Centralized provisioning of up to 2,500 Contivity devices
- Automated Contivity device changes and updates
- Easy-to-use single view management
- Work-flow wizards simplify configuration
- Software image and license management
- Audit logging of all changes for security and archival purposes

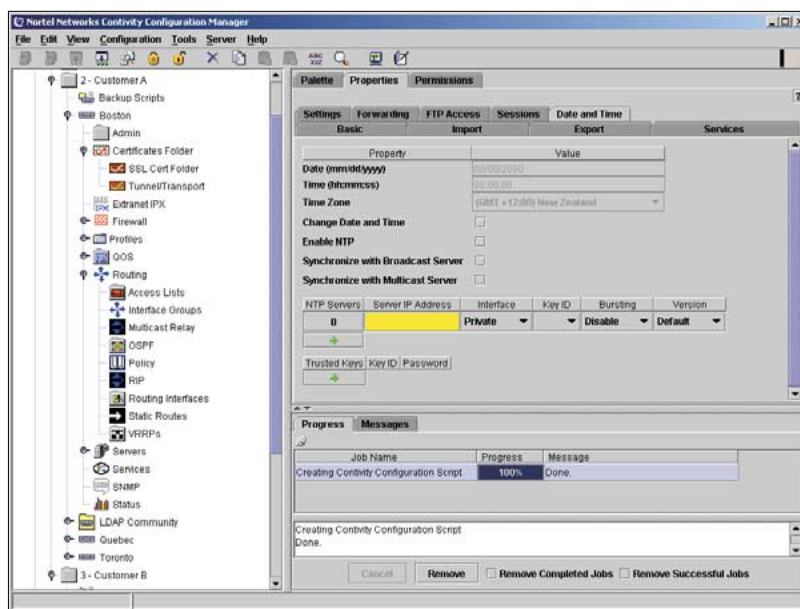


Figure 1. CCM offers both network and element views of Contivity devices, can quickly modify Contivity configurations, and store them in a centralized database.

Contivity* Configuration Manager (CCM) is a multi-element manager that addresses network administrators' need to provision and maintain Contivity devices within their network. It offers centralized provisioning of the Contivity network and can configure, store, and manage all Contivity service elements, including routing, firewall, and virtual private networking (VPN). Using CCM, network administrators can quickly and easily deploy new services across a large community of Contivity devices.

With an easy-to-use graphical interface, CCM can manage up to 2,500 Contivity devices, storing all system information in a quickly accessible up-to-date database. Through its point-and-click view of Contivity systems and services, CCM automates the process of updating, creating, and replicating Contivity system information—minimizing the time required to provision Contivity devices.

Centralized provisioning

CCM simplifies the network administrator's task by automating and centralizing standard Contivity configuration tasks. Using CCM, a network administrator can connect to Contivity systems anywhere in the network, upload their configuration, make modifications, and store the information in a central

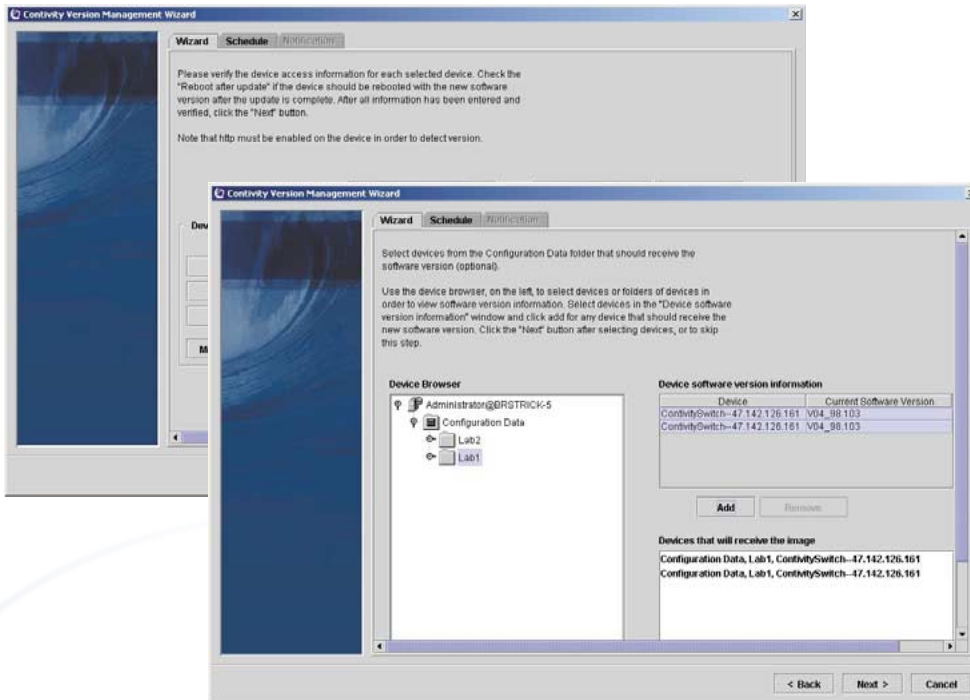


Figure 2. CCM wizards provide help text and pop-up screens to guide the user through configuration.

Contivity Configuration Manager

Features	Benefits
GUI interface	Easy-to-use point and click interface reduces configuration time
Multi-device configuration copy	Cut and paste functionality allows new configurations to be quickly created, eliminating repetitive tasks
Local or remote configuration	Flexible interface allows Contivity devices to be configured locally within CCM or remotely using a standard Web browser
Work-flow wizards	Streamlines the configuration process for complex operations through guided, step-by-step instructions
Java-based utility	Platform independent—can run on Windows and Solaris platforms
File management services	Can manage and update Contivity image, script, log, and configuration files. Facilitates revision control and historical auditing of configurations
Context-sensitive screens	Only parameters relevant to the interface or element being configured are displayed. Simplifies and guides the user through the configuration process
Time of day scheduling	Updates/changes can be scheduled at the most convenient time, even during off-hours
Audit logs	Comprehensive log on all changes provides information for archival and/or security purposes

database. Device configurations can subsequently be downloaded to one or more Contivity systems across the network. These operations can be automated across multiple systems as well as scheduled for particular dates or time of day. Once the task is successfully completed, CCM can send notification via e-mail. This offers the network administrator maximum convenience and flexibility in provisioning their Contivity network.

By storing all information in a central database, CCM maintains a complete inventory of Contivity configurations. System information can be cataloged, backed-up either on-line or off-line, modified, or replicated. CCM can thus consolidate provisioning of Contivity networks, reducing total configuration time and ensuring that all system information is accurate and up-to-date.

Easy-to-use single view management

CCM offers an easy-to-use intuitive interface for viewing and managing Contivity devices. Utilizing a multi-pane menu design, CCM can display a hierarchical view of Contivity systems along with their physical and logical components in one pane. System elements can be modified in another pane, while status is reported in a third pane. This allows for easy identification of systems and their components when performing updates and/or modifications. CCM can further group and display Contivity systems by location, function, or other organizational paradigm. This permits quick recognition of specific systems, as well as consolidated operations across multiple Contivity devices at one time.

Work-flow 'wizards'

CCM includes built-in work-flow wizards for common configuration tasks. These guide the user through device set-up using step-by-step prompts and assigned defaults for required parameters—easing the configuration process. Both configuration and reporting wizards are available to help guide the novice user through firewall policy and rule definitions, VPN tunnel set-up, capacity and trend reporting, and many other functions.

Single and multi-administrator access

As a client-server application, CCM runs on either a Windows NT or a Sun Solaris platform and can be accessed by up to 20 concurrent users or clients. Multi-level permission rights can be defined for users to limit access to particular systems or to specific service elements, such as VPN or firewall. This enables fine grain control over services and/or systems a particular user or set of users can view or modify. Further, as a user edits a Contivity service element or file, CCM can lock down that component so that multiple users do not try to update a component at the same time.

Device replication and compare

Once stored in CCM, new Contivity device configurations can be created by replicating an entire configuration file or a portion of the file. Replicated configurations can be applied to a new or existing Contivity device and/or backed-up to the database for future use. CCM can also compare configuration settings—either between two Contivity systems or between an existing and previous stored configuration—to verify accuracy and as an aid in troubleshooting device set-up.

File, image, and license management

In addition to configuration files, CCM can manage Contivity image, script, and log files, as well as software licenses. CCM can automate upload and download of these files from/to multiple Contivity systems and archive them in the CCM database—providing a single point of control for all Contivity software. Further, CCM's image management tools can group and remotely activate Contivity operating software by revision, so that administrators do not have to deal explicitly with image file directories and lower level concepts. And CCM license management offers centralized distribution and inventory of individual Contivity service licenses (e.g., Advanced Routing, Stateful Firewall) facilitating proper distribution and activation on Contivity network devices.

Technical specifications—features and capabilities

Contivity Configuration Manager 2.0

Minimum system requirements (250- and 2500-device license):

CCM for Solaris

Server

Sun Ultra 30, 400 Mhz or faster
1 Gbyte memory
1 GByte disk space
Solaris 2.8

Client

Sun Ultra 1, 300 Mhz or faster
256 Mbyte memory
100 Mbyte disk space
Solaris 2.8
Netscape 4.7 (or later)

CCM for Windows

Server

IBM-compatible PC with Intel Pentium III,
500 Mhz or faster
1 Gbyte memory
1 Gbyte disk space
Windows 2000 Professional Service Pack 2
or Windows NT 4.0 (Server or Workstation) and Service Pack 6a (or greater)

Client

IBM-compatible PC with Intel Pentium II, 300 Mhz or faster
256 Mbyte memory
100 Mbyte disk space
Windows 2000 Professional Service Pack or Windows NT 4.0 (Server or Workstation) and Service 6a (or greater)
Netscape 4.7 (or later) or Microsoft Internet Explorer 5.0 (or greater)

Supported Contivity models and operating systems

- Contivity 100 and 400; version 7.11 or 7.20
- Contivity 600, 1010/1050/1100, 1500/1600/1700, 2500/2600/2700, 4500/4600 and 5000; Version 3.6 and greater

Database software requirements

- CCM ships standard with an embedded database
- Also compatible with Oracle Database Standard Edition, version 8.1.7 or 9i (customer-supplied)

Ordering Information

<i>Product</i>	<i>Part #</i>
• CCM Version 2.0, 250-device license	DM0021017-2.0
• CCM Version 2.0, 2,500-device license	DM0021018-2.0
• CCM Upgrade from 250 to 2,500 devices	DM00210019-2.0

Audit logging

CCM can generate audit reports on all configuration activity performed by CCM users. This enables the network administrator to keep a log of all changes for archival and/or security purposes.

Integrated applications improve manageability

CCM can be integrated with other applications, including Web browsers, to facilitate device management. For example, a network administrator can embed a specific Web URL within CCM for help or additional information on the network—or launch the Contivity Web GUI from within CCM to perform real-time updates on particular Contivity devices. CCM can also schedule and run management scripts for bulk updates of Contivity devices. Last, CCM itself can be integrated into third-party network management systems, such as HP Openview, to operate as part of a higher level management solution.

Scalable, comprehensive device support

Available in either a 250-device or 2500-device license, CCM can manage both large and small Contivity networks. Both versions perform all available CCM functions and can oversee the full Contivity family. CCM is also continuously updated to support the latest Contivity operating systems, features, and devices, making it the most robust and complete tool for provisioning Contivity networks.

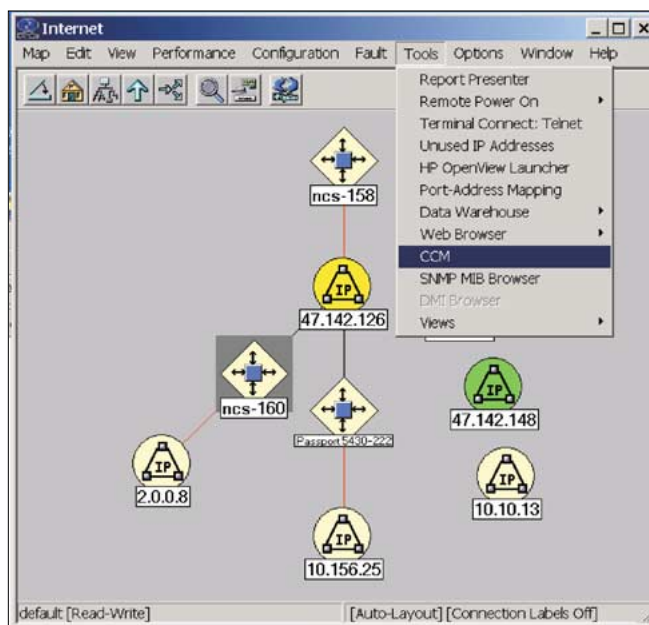


Figure 3. CCM can also be integrated into and launched from third-party network management systems, such as HP Openview.

In the United States:

Nortel Networks
35 Davis Drive
Research Triangle Park, NC 27709
USA

In Canada:

Nortel Networks
8200 Dixie Road,
Suite 100
Brampton, Ontario L6T 5P6
Canada

In Caribbean and Latin America:

Nortel Networks
1500 Concorde Terrace
Sunrise, FL 33323
USA

In Europe:

Nortel Networks
Maidenhead Office Park
Westacott Way
Maidenhead Berkshire SL6 3QH
UK

In Asia:

Nortel Networks Asia
6/F Cityplaza 4,
Taikooshing,
12 Taikoo Wan Road,
Hong Kong



Nortel Networks is an industry leader and innovator focused on transforming how the world communicates and exchanges information. The company is supplying its service provider and enterprise customers with communications technology and infrastructure to enable value-added IP data, voice and multimedia services spanning Wireless Networks, Wireline Networks, Enterprise Networks, and Optical Networks. As a global company, Nortel Networks does business in more than 150 countries. More information about Nortel Networks can be found on the Web at:

www.nortelnetworks.com

For more information, contact your Nortel Networks representative, or call 1-800-4 NORTEL or 1-800-466-7835 from anywhere in North America.

GSA Schedule GS-35F-0140L

1-888-GSA-NTEL

Nortel Networks, the Nortel Networks logo, the globemark design, and Contivity are trademarks of Nortel Networks. All other trademarks are the property of their owners.

Copyright © 2003 Nortel Networks. All rights reserved. Information in this document is subject to change without notice. Nortel Networks assumes no responsibility for any errors that may appear in this document.

NN104042-042503